

Lampiran 1 Daftar Sampel**DAFTAR SAMPEL PERUSAHAAN MANUFAKTUR YANG
TERDAFTAR DIBURSA EFEK INDONESIA TAHUN 2016-2020**

No	Kode Saham	Nama Perusahaan
1	INTP	Indocement Tunggal Prakarsa Tbk
2	SMBR	Semen Baturaja (Persero) Tbk
3	SMCB	Holcim Indonesia Tbk
4	SMGR	Semen Indonesia (Persero) Tbk
5	WSBP	Waskita Beton Precast Tbk
6	WTON	Wijaya Karya Beton Tbk
7	AMFG	Asahimas Flat Glass Tbk
8	ARNA	Arwana Citramulia Tbk
9	KIAS	Keramika Indonesia Assosiasi Tbk
10	MLIA	Mulia Industrindo Tbk
11	TOTO	Surya Toto Indonesia Tbk
12	ALKA	Alakasa Industrindo Tbk
13	BAJA	Saranacentral Bajatama Tbk
14	BTON	Betonjaya Manunggal Tbk
15	CTBN	Citra Tubindo Tbk
16	GDST	Gunawan Dianjaya Steel Tbk
17	ISSP	Steel Pipe Industry of Indonesia Tbk
18	NIKL	Pelat Timah Nusantara Tbk
19	TBMS	Tembaga Mulia Semanan Tbk
20	ADMG	Polychem Indonesia Tbk
21	AGII	Aneka Gas Industri Tbk
22	BRPT	Barito Pacific Tbk
23	DPNS	Duta Pertiwi Nusantara Tbk
24	EKAD	Ekadharma International Tbk
25	SRSN	Indo Acidatama Tbk
26	TPIA	Chandra Asri Petrochemical Tbk
27	UNIC	Unggul Indah Cahaya Tbk
28	AKPI	Argha Karya Prima Industry Tbk
29	FPNI	Lotte Chemical Titan Tbk
30	IGAR	Champion Pacific Indonesia Tbk
31	IMPC	Impack Pratama Industri Tbk
32	IPOL	Indopoly Swakarsa Industry Tbk
33	YPAS	Yanaprima Hastapersada Tbk
34	JPFA	Japfa Comfeed Indonesia Tbk
35	MAIN	Malindo Feedmill Tbk
36	SIPD	Sierad Produce Tbk
37	SULI	SLJ Global Tbk.

**DAFTAR SAMPEL PERUSAHAAN MANUFAKTUR YANG TERDAFTAR
DIBURSA EFEK INDONESIA TAHUN 2016-2020**

38	TIRT	Tirta Mahakam Resources Tbk
39	ALDO	Alkindo Naratama Tbk
40	FASW	Fajar Surya Wisesa Tbk
41	INKP	Indah Kiat Pulp & Paper Tbk
42	KDSI	Kedawung Setia Industrial Tbk
43	SPMA	Suparma Tbk
44	TKIM	Pabrik Kertas Tjiwi Kimia Tbk
45	ASII	Astra International Tbk
46	AUTO	Astra Otoparts Tbk
47	BOLT	Garuda Metalindo Tbk
48	BRAM	Indo Kordsa Tbk
49	GDYR	Goodyear Indonesia Tbk
50	GJTL	Gajah Tunggal Tbk
51	INDS	Indospring Tbk
52	MASA	Multistrada Arah Sarana Tbk
53	PRAS	Prima Alloy Steel Universal Tbk
54	SMSM	Selamat Sempurna Tbk
55	INDR	Indo-Rama Synthetics Tbk
56	POLY	Asia Pacific Fibers Tbk
57	SRIL	Sri Rejeki Isman Tbk
58	SSTM	Sunson Textile Manufacturer Tbk
59	TRIS	Trisula International Tbk
60	JECC	Jembo Cable Company Tbk
61	KBLM	Kabelindo Murni Tbk
62	SCCO	Supreme Cable Manufacturing & Commerce Tbk
63	VOKS	Voksel Electric Tbk
64	PTSN	Sat Nusapersada Tbk
65	AISA	Tiga Pilar Sejahtera Food Tbk
66	BUDI	Budi Starch & Sweetener Tbk
67	CEKA	Wilmar Cahaya Indonesia Tbk
68	DLTA	Delta Djakarta Tbk
69	ICBP	Indofood CBP Sukses Makmur Tbk
70	INDF	Indofood Sukses Makmur Tbk
71	MLBI	Multi Bintang Indonesia Tbk
72	MYOR	Mayora Indah Tbk
73	ROTI	Nippon Indosari Corpindo Tbk
74	SKLT	Sekar Laut Tbk

**DAFTAR SAMPEL PERUSAHAAN MANUFAKTUR YANG
TERDAFTAR DIBURSA EFEK INDONESIA TAHUN 2016-2020**

75	ULTJ	Ultrajaya Milk Industry & Trading Co. Tbk
76	GGRM	Gudang Garam Tbk
77	HMSP	HM Sampoerna Tbk
78	RMBA	Bentoel Internasional Investama Tbk
79	WIIM	Wismilak Inti Makmur Tbk
80	DVLA	Darya-Varia Laboratoria Tbk
81	INAF	Indofarma (Persero) Tbk
82	KAEF	Kimia Farma (Persero) Tbk
83	KLBF	Kalbe Farma Tbk
84	MERK	Merck Tbk
85	PYFA	Pyridam Farma Tbk
86	SIDO	Industri Jamu dan Farmasi Sido Muncul Tbk
87	TSPC	Tempo Scan Pacific Tbk
88	KINO	Kino Indonesia Tbk
89	MBTO	Martina Berto Tbk
90	TCID	Mandom Indonesia Tbk
91	UNVR	Unilever Indonesia Tbk
92	CINT	Chitose Internasional Tbk.
93	KICI	Kedaung Indah Can Tbk
94	LMPI	Langgeng Makmur Industri Tbk

Lampiran 2. Tabulasi Data Penelitian
TABULASI DATA PENELITIAN

Kode	Tahun	Komposisi Komisaris Independen (X1)	Kepemilikan Manajerial (X2)	Kepemilikan Asing (X3)	Hutang (X4)	Kualitas Audit (X5)	Nilai perusahaan (Y)
INTP	2016	0.333333333	0	0.510014315	0.153484	1	2.01332263
INTP	2017	0.333333333	0	0.510014315	0.175398	1	2.94869596
INTP	2018	0.333333333	0	0.510014315	0.196669	1	2.60847243
INTP	2019	0.333333333	0	0.510014315	0.200495	1	2.72123035
INTP	2020	0.333333333	0	0.510014315	0.233061	1	2.9084022
SMBR	2016	0.6	0	0	0.399941	0	6.56810488
SMBR	2017	0.2	0	0	0.482726	0	7.71305425
SMBR	2018	0.4	0	0	0.594302	0	3.50894271
SMBR	2019	0.4	0	0	0.599885	0	3.2720268
SMBR	2020	0.5	0	0	0.683499	0	3.47898285
SMCB	2016	0.428571429	0	0.956438767	1.451821	1	0.94110321
SMCB	2017	0.375	0	0.903125717	1.727044	1	0.9593186
SMCB	2018	0.375	0	0.903125717	1.909316	1	1.43007104
SMCB	2019	0.333333333	0	0	1.802318	1	1.41854763
SMCB	2020	0.333333333	0	0	1.740898	1	1.36678162
SMGR	2016	0.285714286	0	0	0.446534	1	1.53920367
SMGR	2017	0.285714286	0	0	0.608575	1	1.57425359
SMGR	2018	0.285714286	0	0	0.557055	1	1.68858367
SMGR	2019	0.285714286	0	0	1.295741	1	1.49231344
SMGR	2020	0.285714286	0	0	1.137949	1	1.54283314
WSBP	2016	0	0	0	0.854603	0	1.52605218
WSBP	2017	0	0	0	1.039121	0	1.23048259
WSBP	2018	0	0	0	0.931208	0	1.13332218
WSBP	2019	0.4	0	0	0.985251	0	1.12311096
WSBP	2020	0.4	0	0	8.12155	0	1.91909266
WTON	2016	0.333333333	0	0	0.871795	0	2.00770911
WTON	2017	0.428571429	0	0	1.572104	0	1.2277594
WTON	2018	0.428571429	0.001907769	0	1.831467	0	1.01578551
WTON	2019	0.5	0.000378408	0	1.946574	0	1.00121907
WTON	2020	0.4	0.008556972	0	1.50961	0	1.03377052
AMFG	2016	0.333333333	4.60829E-05	0.438615207	0.529449	1	0.87439095
AMFG	2017	0.333333333	0	0.438615207	0.766141	1	0.85098047
AMFG	2018	0.333333333	0.000184332	0.438615207	1.344569	1	0.76339463
INTP	2016	0.333333333	0	0.510014315	0.153484	1	2.01332263
INTP	2017	0.333333333	0	0.510014315	0.175398	1	2.94869596
INTP	2018	0.333333333	0	0.510014315	0.196669	1	2.60847243
INTP	2019	0.333333333	0	0.510014315	0.200495	1	2.72123035
INTP	2020	0.333333333	0	0.510014315	0.233061	1	2.9084022

SMBR	2016	0.6	0	0	0.399941	0	6.56810488
ARNA	2017	0.5	0.37322424	0	0.555612	1	1.92507813
ARNA	2018	0.5	0.37322424	0	0.507306	1	2.20200832

TABULASI DATA PENELITIAN

ARNA	2019	0.5	0.37322424	0	0.528862	1	2.28008961
ARNA	2020	0.5	0.37322424	0	0.50991	1	2.18579066
KIAS	2016	0.333333333	0	0	0.223443	1	0.2009173
KIAS	2017	0.333333333	0	0	0.238919	1	0.21688869
KIAS	2018	0.333333333	0	0	0.258029	1	0.23004089
KIAS	2019	0.333333333	0	0	0.36012	1	0.29927646
KIAS	2020	0.333333333	0	0	0.198447	1	0.20719691
MLIA	2016	0.4	0.00058254	0.150351247	3.788036	1	0.88535759
MLIA	2017	0.4	0.08267158	0	1.956564	1	0.81226449
MLIA	2018	0.4	0.08267158	0	1.348444	1	0.87705421
MLIA	2019	0.4	0.000266969	0	1.273264	1	0.8484567
MLIA	2020	0.4	0.000266969	0	0.950953	1	0.82282708
TOTO	2016	0.4	0	0.379025853	0.693998	1	2.40056874
TOTO	2017	0.4	0	0.379025853	0.668736	1	1.89042157
TOTO	2018	0.4	0	0.379025853	0.501505	1	1.57363277
TOTO	2019	0.4	0	0.379025853	0.516668	1	1.77631758
TOTO	2020	0.4	0	0.379025853	0.380976	1	1.87546766
ALKA	2016	0	0	0.74790071	1.235826	0	1.59319619
ALKA	2017	0	0	0	2.888461	0	1.25181009
ALKA	2018	0	0	0	5.442557	0	1.07946156
ALKA	2019	0	0	0	4.771648	0	1.14065957
ALKA	2020	0	0	0	2.979241	0	1.2652972
BAJA	2016	0.333333333	0.777777778	0	4.000577	0	1.40452513
BAJA	2017	0.333333333	0.777822222	0	4.502092	0	1.12254627
BAJA	2018	0.333333333	0.777822222	0	10.77687	0	1.14079141
BAJA	2019	0.333333333	0.777822222	0	10.28053	0	1.15870169
BAJA	2020	0.333333333	0.777822222	0	4.948302	0	1.13250596
BTON	2016	0.5	0.894444444	0	0.235187	0	0.70210817
BTON	2017	0.5	0.894444444	0	0.186646	0	0.60066336
BTON	2018	0.5	0.894444444	0	0.186769	0	0.52505602
BTON	2019	0.5	0.894444444	0	0.251457	0	1.06907454
BTON	2020	0.5	0.944494444	0	0.244817	0	1.12845009
CTBN	2016	0.333333333	2.68625E-05	0.886896023	0.357106	1	0.28921134
CTBN	2017	0.333333333	2.68625E-05	0.886896023	0.419291	1	0.32139651
CTBN	2018	0.333333333	2.68625E-05	0.886896023	0.576456	1	0.38777626
CTBN	2019	0.333333333	0	0.886896023	0.698587	0	0.43124734
CTBN	2020	0.333333333	0	0.886896023	0.31304	0	0.26479233
GDST	2016	0.333333333	0.873290915	0	0.511327	0	1.07512428

GDST	2017	0.5	0.873290915	0	0.52252	0	0.86566784
GDST	2018	0.333333333	0.869494349	0	0.508814	0	0.97989336
GDST	2019	0.333333333	0.869494349	0	0.916935	0	1.04069019
GDST	2020	0.333333333	0.869484341	0	0.875269	0	1.159289

TABULASI DATA PENELITIAN

ISSP	2016	0.4	0	0	1.284189	0	0.81195975
ISSP	2017	0.4	0	0	1.206792	0	0.67865814
ISSP	2018	0.4	0	0	1.227493	0	0.64400835
ISSP	2019	0.25	0	0	1.073314	0	0.65301284
ISSP	2020	0.25	0	0	0.821884	0	0.60484079
NIKL	2016	0.333333333	0.000906414	0.55	1.991142	0	0.71312366
NIKL	2017	0.333333333	0.000464422	0.55	2.028392	1	0.76882685
NIKL	2018	0.333333333	0.000412507	0.55	2.432406	1	0.77013049
NIKL	2019	0.333333333	0	0.55	2.323658	1	0.7516934
NIKL	2020	0.333333333	0	0.55	1.726566	1	0.702096
TBMS	2016	0.4	0.000571677	0.524184679	3.486029	1	3.05528913
TBMS	2017	0.4	0.000571677	0.524184679	3.513441	1	2.78429233
TBMS	2018	0.4	0.000544455	0.524184679	3.451646	1	2.50670099
TBMS	2019	0.4	0.000544455	0.524184679	2.21677	1	2.93147282
TBMS	2020	0.4	0.000544455	0.524184679	2.050023	1	3.36570151
ADMG	2016	0.5	0	0.495069561	0.551576	1	0.35678072
ADMG	2017	0.5	0	0.495069561	0.561448	1	0.36212625
ADMG	2018	0.4	0	0.495069561	0.151384	1	0.13583125
ADMG	2019	0.4	0	0.495069561	0.228102	1	0.19100744
ADMG	2020	0.5	0	0.495069561	0.228797	1	0.19281157
AGII	2016	0.333333333	0.044600967	0	1.085513	0	0.97398437
AGII	2017	0.333333333	0.056444666	0	0.88493	0	0.75379119
AGII	2018	0.333333333	0.056738471	0	1.111879	0	0.84017714
AGII	2019	0.333333333	0.000485186	0	1.127543	0	0.80948076
AGII	2020	0.333333333	0.077224785	0	1.105606	0	0.75968659
BRPT	2016	0.333333333	0.016016676	0.60003901	0.774818	1	4.4144593
BRPT	2017	0.333333333	0.71187551	0	0.806202	1	9.10672525
BRPT	2018	0.333333333	0.732031366	0	1.606359	1	6.65422812
BRPT	2019	0.5	0.718237611	0	1.606291	1	32.963526
BRPT	2020	0.5	0.721787645	0	1.603613	1	32.7051178
DPNS	2016	0.333333333	0.057108818	0.086823919	0.124837	0	0.5582595
DPNS	2017	0.333333333	0.059071147	0.086823919	0.151794	0	0.50747406
DPNS	2018	0.5	0.059071147	0.154888746	0.160155	0	0.46281941
DPNS	2019	0.5	0.059055987	0.154888746	0.127754	0	0.44634663
DPNS	2020	0.333333333	0.059036934	0.154284753	0.11406	0	0.45301564
EKAD	2016	0.5	0	0	0.18666	0	0.7441632
EKAD	2017	0.5	0	0	0.202092	0	0.77764019
EKAD	2018	0.5	0	0	0.177599	0	0.85100817
EKAD	2019	0.5	0	0	0.135701	0	0.7473656

EKAD	2020	0.5	0	0	0.136101	0	0.70104335
SRSN	2016	0.375	0.220501155	0.352101669	0.783717	0	0.8590899
SRSN	2017	0.375	0.517772591	0	0.57092	0	0.82457292

TABULASI DATA PENELITIAN

SRSN	2018	0.375	0.517772591	0	0.43741	0	0.85653569
SRSN	2019	0.333333333	0.511554799	0	0.514275	0	0.84949498
SRSN	2020	0.333333333	0.511554799	0	0.542552	0	0.80313391
TPIA	2016	0.428571429	0.01034093	0.507413988	0.865051	1	32.3413236
TPIA	2017	0.428571429	0.148466614	0.353184685	0.790067	1	36.2599868
TPIA	2018	0.428571429	0.149062761	0.353184685	0.792852	1	33.7379829
TPIA	2019	0.428571429	0.149554997	0.353184685	0.959811	1	30.8477663
TPIA	2020	0.428571429	0.152323559	0.353184685	0.98393	1	30.5183188
UNIC	2016	0.333333333	0	0	0.407755	1	4.29335454
UNIC	2017	0.333333333	0	0	0.41244	1	6.15127282
UNIC	2018	0.333333333	0	0	0.42131	1	6.62014061
UNIC	2019	0.333333333	0	0	0.24717	1	8.29191588
UNIC	2020	0.333333333	0	0	0.219121	1	7.93319109
AKPI	2016	0.333333333	0	0.450903543	1.33556	1	0.80579027
AKPI	2017	0.333333333	0.045695031	0	1.436797	1	0.76920341
AKPI	2018	0.333333333	0.045695031	0	1.488512	1	0.76425518
AKPI	2019	0.333333333	0.045695031	0	1.230421	1	0.72797372
AKPI	2020	0.333333333	0.05075169	0	1.012554	0	0.68834912
FPNI	2016	0.5	0	0.904043554	0.979692	1	3.97648567
FPNI	2017	0.5	0	0.904043554	1.113272	1	6.01099169
FPNI	2018	0.5	0	0.924994575	0.909845	1	5.0244464
FPNI	2019	0.5	0	0.924994575	0.670713	1	5.90982752
FPNI	2020	0.5	0	0.924994575	0.569713	1	6.88417527
IGAR	2016	0.333333333	0	0	0.175831	0	1.29990352
IGAR	2017	0.333333333	0	0	0.160824	1	0.85487296
IGAR	2018	0.333333333	0	0	0.180743	1	0.80780755
IGAR	2019	0.333333333	0	0	0.150243	1	0.73510326
IGAR	2020	0.333333333	0	0	0.121771	1	0.65820801
IMPC	2016	0.5	0.0164895	0.100341368	0.857007	0	2.63824254
IMPC	2017	0.5	0.016856936	0	0.780171	0	2.73422803
IMPC	2018	0.5	0.016856936	0	0.727269	0	2.33797496
IMPC	2019	0.5	0.016856936	0	0.77601	0	2.20519974
IMPC	2020	0.5	0.016856936	0	1.839884	0	2.7025045
IPOI	2016	0.333333333	0	0.526907388	0.81394	0	3.5463347
IPOI	2017	0.333333333	0	0.526907388	0.804979	0	3.2893675
IPOI	2018	0.333333333	0	0.526907388	0.806791	0	2.40958561
IPOI	2019	0.333333333	0	0.526907388	0.698483	0	2.52389166
IPOI	2020	0.5	0	0.526907388	0.594813	0	2.60103708

YPAS	2016	0.3333333333	0.003517215	0	0.973626	0	2.49547608
YPAS	2017	0.3333333333	0.003517215	0	1.388352	0	2.7049554
YPAS	2018	0.3333333333	0.003517215	0	1.801128	0	2.21735295
YPAS	2019	0.3333333333	0.003517215	0	1.29286	0	2.19643142

TABULASI DATA PENELITIAN

YPAS	2020	0.333333333	0.003517215	0	1.100455	0	2.46167406
JPFA	2016	0.4	0	0.629772307	1.053889	1	1.37553047
JPFA	2017	0.333333333	0	0.629772307	1.152886	1	1.23889624
JPFA	2018	0.5	0	0.640833341	1.306158	1	1.58187671
JPFA	2019	0.5	0	0.524289113	1.240171	1	1.8428254
JPFA	2020	0.6	0	0.544674724	1.274082	1	1.95199253
MAIN	2016	0.6	0	0.572704921	1.193455	0	1.30461014
MAIN	2017	0.6	0	0.572704921	1.393815	1	0.98907784
MAIN	2018	0.6	0	0.572704921	0.898472	1	1.11331018
MAIN	2019	0.6	0	0.572704921	1.250714	1	1.39342646
MAIN	2020	0.6	0	0.572704921	1.274609	1	1.39593433
SIPD	2016	0.333333333	0	0	1.246361	0	0.90953558
SIPD	2017	0.333333333	0	0	1.830361	0	1.20272965
SIPD	2018	0.333333333	0	0	1.603106	0	1.24319999
SIPD	2019	0.333333333	0	0	1.696745	0	1.17657513
SIPD	2020	0.5	0	0	1.785989	0	1.17043221
SULI	2016	0.5	0.433389998	0.270726735	-6.92994	1	7.62439933
SULI	2017	0.5	0.382110377	0.328544658	94.09968	1	10.1684045
SULI	2018	0.5	0.360990824	0.281428451	19.296	1	4.93015531
SULI	2019	0.5	0.324582063	0.219597203	22.01414	0	4.75216739
SULI	2020	0.333333333	0.056444795	0.219597203	-5.70376	0	6.60036417
TIRT	2016	0.5	0	0.283176666	5.4349	0	0.99958792
TIRT	2017	0.5	0	0	5.939774	0	0.96069542
TIRT	2018	0.333333333	0	0	9.554518	0	0.97319008
TIRT	2019	0.333333333	0	0	23.9173	0	1.0547547
TIRT	2020	0.333333333	0	0	-2.01128	0	2.22210054
ALDO	2016	0.333333333	0.143216784	0	1.042585	0	1.31465386
ALDO	2017	0.333333333	0.143216784	0	1.173723	0	1.20167805
ALDO	2018	0.333333333	0.143216784	0	0.99312	0	0.91336899
ALDO	2019	0.333333333	0.096508392	0	0.734352	0	1.22007406
ALDO	2020	0.333333333	0.096508392	0	0.615851	0	1.18863823
FASW	2016	0.6	0.08450359	0	1.71755	1	1.81564942
FASW	2017	0.5	0.08450359	0	1.849449	1	2.07709695
FASW	2018	0.666666667	0.08450359	0	1.556963	1	2.3658993
FASW	2019	0.375	0	0.552350825	1.291267	1	2.30928354
FASW	2020	0.333333333	0	0.552350825	1.512122	1	2.30220349
INKP	2016	0.428571429	0	0	1.439822	0	1.34968348
INKP	2017	0.428571429	0	0	1.372615	0	4.44836875

INKP	2018	0.428571429	0	0	1.320281	0	7.78987918
INKP	2019	0.428571429	1.95212E-05	0	1.1225	0	8.89422566
INKP	2020	0.428571429	1.95212E-05	0	0.999294	0	9.32162455
KDSI	2016	0.4	0.053945926	0	1.721095	0	0.75659559

TABULASI DATA PENELITIAN

KDSI	2017	0.4	0.055002963	0	1.460304	0	0.70149145
KDSI	2018	0.25	0.055002963	0	1.269576	0	0.79762733
KDSI	2019	0.25	0.054946173	0	1.061229	0	0.82821733
KDSI	2020	0.333333333	0.110120247	0	0.877569	0	0.80876871
SPMA	2016	0.8	0	0.441725021	0.970486	0	0.67513816
SPMA	2017	0.8	0	0.363695007	0.836143	0	0.65654181
SPMA	2018	0.8	0	0	0.807635	0	0.67358024
SPMA	2019	0.8	0	0	0.722007	0	0.64570352
SPMA	2020	0.833333333	0	0	0.512392	0	0.59078417
TKIM	2016	0.5	0	0	1.658564	0	1.40663695
TKIM	2017	0.5	0	0	1.589316	0	4.13609641
TKIM	2018	0.428571429	0	0	1.40056	0	12.2377971
TKIM	2019	0.428571429	0	0	1.210554	0	14.2465643
TKIM	2020	0.428571429	0	0	1.031875	0	14.6396859
ASII	2016	0.333333333	0.000399915	0.501148083	0.87165	1	1.74505128
ASII	2017	0.333333333	0.000399915	0.501148083	0.891178	1	1.60776906
ASII	2018	0.3	0.000483453	0.501148083	0.976973	1	1.46013682
ASII	2019	0.3	0.000605799	0.501148083	0.884517	1	1.44131125
ASII	2020	0.3	0.000581073	0.501148083	0.730346	1	1.44553236
AUTO	2016	0.375	0	0	0.386817	1	0.95509902
AUTO	2017	0.375	0	0	0.37208	1	0.94374687
AUTO	2018	0.375	0	0	0.410703	1	0.73702202
AUTO	2019	0.375	0	0	0.374676	1	0.74352357
AUTO	2020	0.375	0	0	0.346853	1	0.79093413
BOLT	2016	0.5	0.224	0	0.254189	0	1.76699947
BOLT	2017	0.333333333	0.224	0	0.649559	0	2.33573239
BOLT	2018	0.333333333	0.224	0	0.778203	0	2.16993976
BOLT	2019	0.333333333	0.224	0	0.663425	0	2.13917618
BOLT	2020	0.333333333	0.224	0	0.598603	0	2.41645512
BRAM	2016	0.4	0.288743269	0.602051516	0.497186	1	10.4778108
BRAM	2017	0.4	0.288743269	0.61589596	0.402702	1	11.1866911
BRAM	2018	0.4	0.288743269	0.61589596	0.34506	1	9.51767193
BRAM	2019	0.4	0.288743269	0.61589596	0.266577	1	10.0723652
BRAM	2020	0.4	0.288743269	0.61589596	0.264809	1	12.1529235
GDYR	2016	0.333333333	0	850	1.005081	1	7.47746458
GDYR	2017	0.333333333	0	850	1.310024	1	6.19871739
GDYR	2018	0.333333333	0	850	1.31674	1	6.88023805
GDYR	2019	0.333333333	0	850	1.276095	1	8.2294908

GDYR	2020	0.3333333333	0	850	1.584635	1	8.67160317
GJTL	2016	0.3333333333	0.011277893	0.594998979	2.197198	1	0.88664745
GJTL	2017	0.3333333333	0.011277893	0.594998979	2.197343	1	0.81750482
GJTL	2018	0.3	0.011254534	0.594998979	2.354671	1	0.81682196

TABULASI DATA PENELITIAN

GJTL	2019	0.285714286	0.011254534	0.594998979	2.023924	1	0.81715224
GJTL	2020	0.285714286	0.010083419	0.594998979	1.593914	1	0.7732237
INDS	2016	0.333333333	0.004352663	0	0.19787	0	0.37976076
INDS	2017	0.333333333	0.004352663	0	0.135116	0	0.45866471
INDS	2018	0.333333333	0.004352663	0	0.131301	0	0.70295842
INDS	2019	0.333333333	0.004088892	0	0.101908	0	0.60184564
INDS	2020	0.333333333	0.004088892	0	0.102397	0	0.62926148
MASA	2016	0.4	0.153223198	0.242656934	0.798827	1	4.51036364
MASA	2017	0.4	0.205957413	0.149095928	0.951396	1	4.3975077
MASA	2018	0.4	0.205957413	0.149095928	1.598248	1	10.8094409
MASA	2019	0.5	0	0.09961581	1.308753	1	16.0379084
MASA	2020	0.5	0	0.09961581	0.96757	1	16.9208629
PRAS	2016	0.333333333	0.049563117	0	1.303697	0	0.64056592
PRAS	2017	0.333333333	0.049563117	0	1.280059	0	0.66141815
PRAS	2018	0.333333333	0.049563117	0	1.376796	0	0.6551332
PRAS	2019	0.333333333	0.049563117	0	1.566305	0	0.68986763
PRAS	2020	0.333333333	0.049563117	0	2.210385	0	0.7708421
SMSM	2016	0.333333333	0.079962453	0	0.427001	1	2.80217982
SMSM	2017	0.5	0.07984884	0	0.336485	1	3.20966033
SMSM	2018	0.5	0.07984884	0	0.302717	1	3.1104749
SMSM	2019	0.5	0.07980475	0	0.272152	1	3.01266017
SMSM	2020	0.5	0.07980475	0	0.2745	1	2.79998119
INDR	2016	0.4	0	0.661301646	1.981368	1	1.29288649
INDR	2017	0.4	0	0.359512769	1.814252	1	1.66695169
INDR	2018	0.333333333	0	0.359512769	1.317806	1	5.38211215
INDR	2019	0.333333333	0	0.361525295	1.028808	1	6.52041789
INDR	2020	0.333333333	0	0.317131432	1.028955	0	7.10328815
POLY	2016	0.333333333	0	0.578504837	-1.24654	0	5.64994525
POLY	2017	0.333333333	0	0.578504837	-1.2455	0	5.83851187
POLY	2018	0.333333333	0	0.578504837	-1.25634	0	6.472428
POLY	2019	0.333333333	0	0.578504837	-1.25713	0	6.64187254
POLY	2020	0.333333333	0	0.578504837	-1.23994	0	7.17704409
SRIL	2016	0.333333333	0.000477602	0	1.860594	0	5.16530924
SRIL	2017	0.333333333	0.010786224	0	1.697902	0	7.14440606
SRIL	2018	0.333333333	0.010786224	0	1.64267	0	5.98847138
SRIL	2019	0.5	0.010786224	0	1.630899	0	5.07956662
SRIL	2020	0.333333333	0.010786224	0	1.754226	0	4.67879087
SSTM	2016	0.4	0.365991464	0	1.730324	0	1.28259166

SSTM	2017	0.4	0.365991464	0	1.850547	0	1.383856
SSTM	2018	0.4	0.365991464	0	1.611723	0	1.55854686
SSTM	2019	0.5	0.372610679	0	1.569346	0	1.56614672
SSTM	2020	0.5	0.354008041	0	1.58714	0	1.81337077

TABULASI DATA PENELITIAN

TRIS	2016	0.333333333	0	0	0.845502	0	1.00730249
TRIS	2017	0.333333333	0.006983663	0	0.529815	0	0.93839175
TRIS	2018	0.333333333	0.006983663	0	0.832735	0	0.65341088
TRIS	2019	0.333333333	0.002399661	0	0.736637	0	1.02658887
TRIS	2020	0.333333333	0.002400616	0	0.658053	0	1.20212449
JECC	2016	0.666666667	0	0.2	2.374614	0	1.03708497
JECC	2017	0.666666667	0	0.2	2.522326	0	1.08468867
JECC	2018	0.5	0	0.2	1.968752	0	1.14146818
JECC	2019	0.25	0	0.2	1.497916	0	1.11200415
JECC	2020	0.25	0	0.2	1.059651	0	1.17862478
KBLM	2016	0.333333333	0.089285714	0	0.993079	0	0.91886093
KBLM	2017	0.333333333	0.089285714	0	0.560721	0	0.61497003
KBLM	2018	0.666666667	0.089285714	0	0.580528	0	0.58295702
KBLM	2019	0.666666667	0.089285714	0	0.513904	0	0.55570661
KBLM	2020	0.5	0.089285714	0	0.219994	0	0.46393382
SCCO	2016	0.333333333	0	0.118081713	1.007452	0	1.1123289
SCCO	2017	0.333333333	0	0.118081713	0.471375	0	0.78128466
SCCO	2018	0.333333333	0	0.118081713	0.430971	0	0.73058328
SCCO	2019	0.333333333	0	0.118081713	0.401027	0	0.70902264
SCCO	2020	0.333333333	0	0.118081713	0.143467	0	0.62244838
VOKS	2016	0.285714286	0	0.630927802	1.493425	0	1.3288243
VOKS	2017	0.333333333	0	0.637671709	1.591953	0	1.22861973
VOKS	2018	0.333333333	0.053625652	0.640058959	1.693803	0	1.13038281
VOKS	2019	0.285714286	0.060410964	0.480102863	1.728814	0	1.01232789
VOKS	2020	0.285714286	0	0.480277351	1.621689	0	1.07465673
PTSN	2016	0.333333333	0.700026193	0	0.312667	0	0.23980184
PTSN	2017	0.333333333	0.700026193	0	0.329969	0	0.25303176
PTSN	2018	0.333333333	0.700026193	0.1	3.128758	0	0.77005467
PTSN	2019	0.333333333	0.700026193	0.1	1.285572	0	0.61306209
PTSN	2020	0.333333333	0.700026193	0.199999944	0.567605	0	0.45391793
AISA	2016	0.4	0	0.374609316	1.170185	0	1.21565385
AISA	2017	0.4	0	0.403733987	1.562421	0	0.78534298
AISA	2018	0.5	9.32082E-05	0.38295427	-1.52635	0	3.1975631
AISA	2019	0	9.32082E-05	0.385448863	-2.12734	0	2.17636051
AISA	2020	0.5	0	0	1.428663	0	1.36594807
BUDI	2016	0.333333333	0	0	1.516611	0	0.73614592
BUDI	2017	0.333333333	0	0	1.460413	0	0.73743637
BUDI	2018	0.333333333	0	0	1.766428	0	0.76581641
BUDI	2019	0.333333333	0	0	1.333871	0	0.72600496

BUDI	2020	0.3333333333	0	0	1.241042	0	0.71169144
CEKA	2016	0.3333333333	0.007563025	0.049915966	0.60596	1	0.94062255
CEKA	2017	0.3333333333	0.007563025	0.049915966	0.542158	1	0.90270671

TABULASI DATA PENELITIAN

CEKA	2018	0.333333333	0.007563025	0.049915966	0.196907	1	0.86438962
CEKA	2019	0.333333333	0	0.049915966	0.231403	1	0.63638494
CEKA	2020	0.333333333	0	0.049563025	0.242687	1	0.71749704
DLTA	2016	0.4	0	0.58334587	0.183156	1	3.49701921
DLTA	2017	0.4	0	0.58334587	0.171405	1	2.88715613
DLTA	2018	0.4	0	0.58334587	0.186388	1	3.04753909
DLTA	2019	0.4	0	0.58334587	0.175039	0	3.50379751
DLTA	2020	0.4	0	0.58334587	0.201669	0	4.0875606
ICBP	2016	0.5	0	0	0.562198	1	3.81988045
ICBP	2017	0.5	0	0	0.555747	1	3.63971961
ICBP	2018	0.5	0	0	0.513495	1	3.88530704
ICBP	2019	0.5	0	0	0.451358	1	3.55716117
ICBP	2020	0.5	0	0	1.058671	1	1.74699383
INDF	2016	0.375	0.00015717	0.500670833	0.870092	1	1.31206095
INDF	2017	0.375	0.00015717	0.500670833	0.880788	1	1.22321768
INDF	2018	0.375	0.000166395	0.500670833	0.933974	1	1.16053171
INDF	2019	0.375	0.00015717	0.500670833	0.7748	1	1.14392957
INDF	2020	0.375	0.00015717	0.500670833	1.061417	1	0.94009511
MLBI	2016	0.428571429	0	0.817822022	1.772273	1	11.5214111
MLBI	2017	0.5	0	0.817822022	1.357091	1	12.054764
MLBI	2018	0.5	0	0.817822022	1.474871	1	12.2630049
MLBI	2019	0.5	0	0.817822022	1.527864	1	12.386939
MLBI	2020	0.5	0	0.817822022	1.028333	1	12.4644725
MYOR	2016	0.4	0.252198673	0	1.062556	0	3.36138592
MYOR	2017	0.4	0.252198673	0	1.028168	0	3.53490264
MYOR	2018	0.4	0.252198673	0	1.059305	0	3.84436584
MYOR	2019	0.4	0.252198673	0	0.923034	0	3.51001709
MYOR	2020	0.4	0.252198673	0	0.754652	0	3.53899405
ROTI	2016	0.333333333	0	0.378670927	1.023661	1	3.27977637
ROTI	2017	0.333333333	0	0.445092727	0.616809	1	2.11143452
ROTI	2018	0.333333333	0	0.473380177	0.506328	1	2.0257351
ROTI	2019	0.333333333	0	0.473380177	0.513965	1	1.95148212
ROTI	2020	0.333333333	0	0.570340946	0.379374	1	2.01196572
SKLT	2016	0.333333333	0.002806611	0.573856969	0.918749	0	0.85322534
SKLT	2017	0.333333333	0.006664429	0.578923995	1.068748	0	1.71075907
SKLT	2018	0.333333333	0.008233257	0.578923995	1.202873	0	1.93253124
SKLT	2019	0.333333333	0.008233257	0.578923995	1.079083	0	1.82914901
SKLT	2020	0.333333333	0.008233257	0.578923995	0.901596	0	1.81300714
ULTJ	2016	0.333333333	0.114883973	0	0.214937	0	3.29068521

ULTJ	2017	0.3333333333	0.338437151	0	0.232417	0	3.07310356
ULTJ	2018	0.3333333333	0.343440454	0	0.163544	0	2.94790462
ULTJ	2019	0.5	0.360142241	0	0.168569	0	2.22473403

TABULASI DATA PENELITIAN

ULTJ	2020	0.5	0.481725959	0	0.83074	0	2.23547892
GGRM	2016	0.5	0.006728866	0	0.591125	1	2.32458826
GGRM	2017	0.5	0.006728866	0	0.582451	1	2.78326895
GGRM	2018	0.5	0.006728866	0	0.530959	1	2.67544477
GGRM	2019	0.5	0.006728866	0	0.5442	1	2.39889404
GGRM	2020	0.5	0.006728866	0	0.336092	1	2.38378063
HMSP	2016	0.4	0	0	0.243841	1	10.6763089
HMSP	2017	0.4	0	0	0.264652	1	12.9624201
HMSP	2018	0.333333333	0	0	0.318007	1	9.50131414
HMSP	2019	0.375	0	0	0.426659	1	9.05100026
HMSP	2020	0.5	0	0	0.642582	1	9.94504287
RMBA	2016	0.5	0	0.997699711	0.4268	1	1.6069941
RMBA	2017	0.666666667	0	0.997699711	0.578229	1	1.34854458
RMBA	2018	0.666666667	0	0.997699711	0.778585	1	1.20102595
RMBA	2019	0.666666667	0	0.997699711	1.023453	0	1.20810947
RMBA	2020	0.666666667	0	0.997699711	1.183239	0	1.65175534
WIIM	2016	0.333333333	0.441089283	0.224784022	0.365799	0	0.95039358
WIIM	2017	0.333333333	0.619053936	0	0.253167	0	0.69884611
WIIM	2018	0.333333333	0.619053936	0	0.249033	0	0.43519486
WIIM	2019	0.333333333	0.619053936	0	0.2578	0	0.58307725
WIIM	2020	0.333333333	0.627340149	0	0.36142	0	0.6270619
DVLA	2016	0.428571429	0	0.921250814	0.418483	1	1.5785819
DVLA	2017	0.428571429	0	0.921250814	0.469933	1	1.65751054
DVLA	2018	0.428571429	0	0.921250814	0.402045	1	1.57792107
DVLA	2019	0.428571429	0	0.921250814	0.40111	1	1.54095206
DVLA	2020	0.428571429	0	0.921250814	0.49795	1	1.55574886
INAF	2016	0.333333333	0	0	1.399681	0	11.0814121
INAF	2017	0.333333333	0	0	1.906242	0	12.608315
INAF	2018	0.333333333	0	0	1.904177	0	14.6226184
INAF	2019	0.333333333	0	0	1.740817	0	11.8100506
INAF	2020	0.666666667	0	0	2.981476	0	11.6022944
KAEF	2016	0.2	2.26864E-08	0	1.030707	0	3.81884364
KAEF	2017	0.2	1.30176E-05	0	1.369718	0	3.03788971
KAEF	2018	0.4	1.30176E-05	0	1.732365	0	1.90864678
KAEF	2019	0.4	0	0	1.475794	0	1.48882653
KAEF	2020	0.25	0	0	1.471662	0	1.77497523
KLBF	2016	0.428571429	0	0	0.221614	1	4.84552262
KLBF	2017	0.428571429	0	0	0.195926	1	4.93139043
KLBF	2018	0.333333333	0	0	0.186446	1	4.08359722

KLBF	2019	0.428571429	0	0	0.213051	1	3.87665426
KLBF	2020	0.428571429	0	0	0.234636	1	3.5865966
MERK	2016	0.333333333	0	0.866506518	0.276763	1	5.7570393

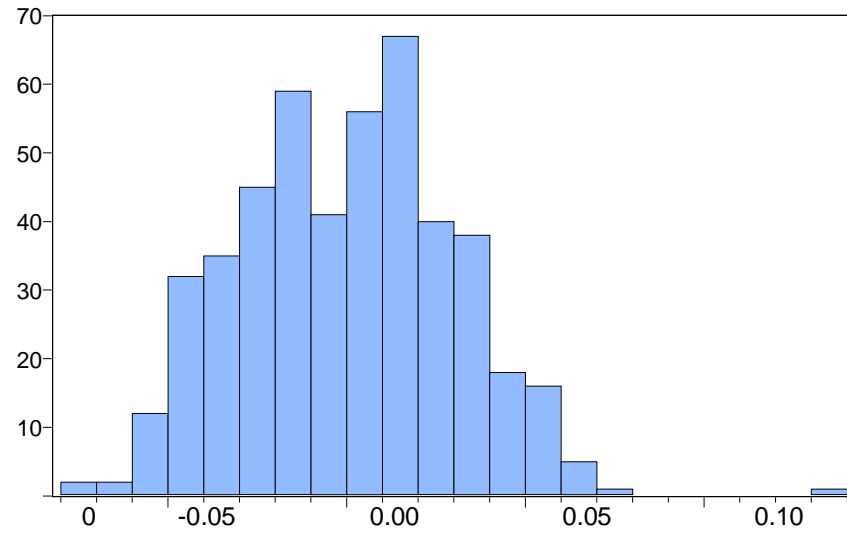
TABULASI DATA PENELITIAN

MERK	2017	0.333333333	0	0.866506518	0.376267	1	4.7692301
MERK	2018	0.5	0	0.866506518	1.437124	1	2.11480036
MERK	2019	0.5	0	0.866506518	0.516908	1	2.46377256
MERK	2020	0.5	0	0.866506518	0.517752	1	2.60545789
PYFA	2016	0.5	0.299561395	0	0.583402	0	1.00902181
PYFA	2017	0.5	0.299561395	0	0.465826	0	0.93146095
PYFA	2018	0.5	0.299561395	0	0.572866	0	0.9048556
PYFA	2019	0.5	0.299561395	0	0.529643	0	0.82303546
PYFA	2020	0.5	0	0.476077798	0.450059	0	0.75046871
SIDO	2016	0.333333333	0.81	0	0.083299	0	2.68767284
SIDO	2017	0.333333333	0	0	0.090589	1	2.67156556
SIDO	2018	0.4	0	0	0.14987	1	3.90547239
SIDO	2019	0.4	0	0	0.154074	1	3.61112789
SIDO	2020	0.5	0	0	0.194856	1	6.9041864
TSPC	2016	0.5	0	0	0.420802	0	1.6422488
TSPC	2017	0.6	0	0	0.462985	0	1.40592227
TSPC	2018	0.6	0	0.053288156	0.448591	0	1.1044669
TSPC	2019	0.4	0	0	0.445816	0	1.12797008
TSPC	2020	0.6	0	0	0.427681	0	1.1373214
KINO	2016	0.5	0.104999995	0.103855355	0.682573	0	1.72354878
KINO	2017	0.5	0.105809895	0.103855355	0.575341	0	1.30065547
KINO	2018	0.5	0.107536095	0.107278985	0.642583	0	1.50473753
KINO	2019	0.5	0.099778695	0.107278985	0.737331	0	1.33403857
KINO	2020	0.5	0.124908904	0.112260184	1.039146	0	1.36586742
MBTO	2016	0.333333333	0.000826636	0	0.610152	0	0.65775934
MBTO	2017	0.333333333	0.000826636	0	0.89142	0	0.6563302
MBTO	2018	0.333333333	0.000826636	0	1.156464	0	0.74432802
MBTO	2019	0.333333333	0.000826636	0	1.513335	0	0.86280469
MBTO	2020	0.333333333	0.000826636	0	0.6663	0	0.57404951
TCID	2016	0.4	0.001422434	0.608352875	0.22541	1	1.33416067
TCID	2017	0.5	0.001422434	0.608352875	0.270932	1	1.73704874
TCID	2018	0.4	0.001258309	0.608352875	0.23964	1	1.6117992
TCID	2019	0.4	0.001258309	0.629073018	0.263502	1	1.52866367
TCID	2020	0.4	0.001357779	0.629073018	0.240518	1	1.68790677
UNVR	2016	0	0	0.849918414	2.559689	1	18.3978889

UNVR	2017	0	0	0.849918414	2.654552	1	23.285751
UNVR	2018	0	0	0.849918414	1.75295	1	18.4062774
UNVR	2019	0	0	0.849918414	2.909487	1	19.219351
UNVR	2020	0	0	0.849918414	3.159024	1	93.6514111
CINT	2016	0.5	0.0035	0	0.223346	0	0.97388209
CINT	2017	0.5	0.006201	0	0.246693	0	0.8987075
CINT	2018	0.5	0.0062069	0	0.264238	0	0.78697109

TABULASI DATA PENELITIAN

CINT	2019	0.5	0.0062069	0.0601948	0.338291	0	0.7705219
CINT	2020	0.3333333333	0.0062103	0.0601948	0.29236	0	0.84868625
KICI	2016	0.3333333333	0.002268696	0.394408696	0.570717	0	0.60024247
KICI	2017	0.3333333333	0.002268696	0.397352899	0.633033	0	0.70350397
KICI	2018	0.3333333333	0.002268696	0.444621377	0.627992	0	0.89444004
KICI	2019	0.3333333333	0.002268696	0.457274638	0.749401	0	0.94490842
KICI	2020	0.3333333333	0.002268696	0.457891304	0.94409	0	1.02699301
LMPI	2016	0.5	0.000166842	0.654947155	0.985351	0	0.66432127
LMPI	2017	0.5	0.68275493	0.057411986	1.218031	0	0.75096246
LMPI	2018	0.5	0.68275493	0.057411986	1.380414	0	0.76450616
LMPI	2019	0.5	0.682759	0.057411986	1.54956	0	0.80738929
LMPI	2020	0.5	0.682759	0.057411986	1.832728	0	0.86363534

Lampiran 3 Hasil Olahan Data Asumsi Kasik**HASIL OLAHDATA ASUMSI KLASIK****NORMALITAS**

Series:	Standardized Residuals
Sample:	2016 2020
Observations:	470
Mean	-1.27e-18
Median	0.001434
Maximum	0.138519
Minimum	-0.077386
Std. Dev.	0.030142
Skewness	0.192692
Kurtosis	3.107113
Jarque-Bera	3.133215
Probability	0.208752

HASIL OLAHDATA ASUMSI KLASIK

MULTIKOLINEARITAS

	KOMISARIS_INDEPENDEN	KEP_MANAJERIAL	KEP_ASING	HUTANG	KUALITAS_AUDIT
KOMISARIS_INDEPENDEN	1	0.06095717000144096	-0.05067109621458837	0.01603189739856925	0.02948287783320503
KEP_MANAJERIAL	0.06095717000144096	1	-0.04825087466143588	0.09384536566171171	-0.2164971560568585
KEP_ASING	-0.05067109621458837	-0.04825087466143588	1	-	0.1163194316621265
HUTANG	0.01603189739856925	0.09384536566171171	-	1	0.01309222128529765
KUALITAS_AUDIT	0.02948287783320503	-0.2164971560568585	0.1163194316621265	0.01309222128529765	1

HASIL OLAHDATA ASUMSI KLASIK

HETEROSKEDASTISITAS

Heteroskedasticity Test: ARCH

F-statistic	1.870275	Prob. F(1,467)	0.1721
Obs*R-squared	1.870792	Prob. Chi-Square(1)	0.1714

Test Equation:

Dependent Variable: RESID^2

Method: Least Squares

Date: 05/11/21 Time: 11:01

Sample (adjusted): 2 470

Included observations: 469 after adjustments

Variable	Coefficient	Std. Error	t-Statistic	Prob.
C	36.38637	16.45191	2.211680	0.0275
RESID^2(-1)	0.063158	0.046182	1.367580	0.1721
R-squared	0.003989	Mean dependent var		38.84049
Adjusted R-squared	0.001856	S.D. dependent var		354.4926
S.E. of regression	354.1635	Akaike info criterion		14.58165
Sum squared resid	58576646	Schwarz criterion		14.59935
Log likelihood	-3417.397	Hannan-Quinn criter.		14.58861
F-statistic	1.870275	Durbin-Watson stat		2.004283
Prob(F-statistic)	0.172101			

HASIL OLAHDATA ASUMSI KLASIK

AUTOKORELASI

Breusch-Godfrey Serial Correlation LM Test:

F-statistic	76.65253	Prob. F(2,462)	0.2583
Obs*R-squared	117.1019	Prob. Chi-Square(2)	0.2464

Test Equation:

Dependent Variable: RESID

Method: Least Squares

Date: 05/11/21 Time: 11:01

Sample: 1 470

Included observations: 470

Presample missing value lagged residuals set to zero.

Variable	Coefficient	Std. Error	t-Statistic	Prob.
KOMISARIS_INDEPENDEN	-1.660527	2.136970	-0.777048	0.4375
KEP_MANAJERIAL	0.843140	1.232887	0.683874	0.4944
KEP_ASING	-0.001216	0.002907	-0.418242	0.6760
HUTANG	-0.007183	0.052899	-0.135794	0.8920
KUALITAS_AUDIT	0.537907	0.523286	1.027941	0.3045
C	0.345512	0.900622	0.383637	0.7014
RESID(-1)	0.437167	0.046229	9.456605	0.0000
RESID(-2)	0.113376	0.046322	2.447553	0.0148
R-squared	0.249153	Mean dependent var		-1.73E-16
Adjusted R-squared	0.237776	S.D. dependent var		6.233918
S.E. of regression	5.442548	Akaike info criterion		6.243246
Sum squared resid	13685.05	Schwarz criterion		6.313931
Log likelihood	-1459.163	Hannan-Quinn criter.		6.271056
F-statistic	21.90072	Durbin-Watson stat		2.015812
Prob(F-statistic)	0.000000			

HASIL OLAH DATA ASUMSI KLASIK

STATISTIK DESKRIPTIF

	Kom_Ind	Kep_Mnj	Kep_Asing	Hutang	Kualitas Audit	Nilai Perusahaan
Mean	0.391117	0.096248	9.265014	1.333697	0.448936	3.363551
Maximum	0.833333	0.944494	850	94.09968	1	93.65141
Minimum	0.2000	0.0002	0.1500	-6.929943	0.32964	0.135831
Std. Dev.	0.118343	0.210958	87.27356	4.775365	0.497916	6.474671
Observations	470	470	470	470	470	470

Lampiran 4 Hasil Olahan Data Estimasi Model Regresi Data Panel dan Pemilihan Model

HASIL OLAHDATA ESTIMASI MODEL REGRESI DATA PANEL DAN PEMILIHAN MODEL

CEM

Dependent Variable: NILAI_PERUSAHAAN

Method: Panel Least Squares

Date: 05/11/21 Time: 10:44

Sample: 2016 2020

Periods included: 5

Cross-sections included: 94

Total panel (balanced) observations: 470

Variable	Coefficient	Std. Error	t-Statistic	Prob.
KOMISARIS_INDEPENDEN	0.456800	0.163157	2.799761	0.0053
KEP_MANAJERIAL	0.036790	0.015716	2.340875	0.0197
KEP_ASING	0.130558	0.043309	3.014593	0.0027
HUTANG	0.222112	0.046918	4.734044	0.0000
KUALITAS_AUDIT	0.257074	0.038109	6.745799	0.0000
C	0.378318	0.068552	5.518676	0.0000
R-squared	0.169075	Mean dependent var		0.241332
Adjusted R-squared	0.160121	S.D. dependent var		0.444006
S.E. of regression	0.406909	Akaike info criterion		1.052230
Sum squared resid	76.82684	Schwarz criterion		1.105244
Log likelihood	-241.2741	Hannan-Quinn criter.		1.073087
F-statistic	18.88273	Durbin-Watson stat		0.129078
Prob(F-statistic)	0.000000			

HASIL OLAHDATA ESTIMASI MODEL REGRESI DATA PANEL DAN PEMILIHAN MODEL

FEM TERPILIH

Dependent Variable: NILAI_PERUSAHAAN
 Method: Panel Least Squares
 Date: 05/11/21 Time: 10:45
 Sample: 2016 2020
 Periods included: 5
 Cross-sections included: 94
 Total panel (balanced) observations: 470

Variable	Coefficient	Std. Error	t-Statistic	Prob.
KOMISARIS_INDEPENDEN	0.116173	0.096178	1.207891	0.2279
KEP_MANAJERIAL	0.023341	0.008720	2.676808	0.0078
KEP_ASING	0.084614	0.043988	2.023585	0.0452
HUTANG	-0.076139	0.042556	-2.289139	0.0344
KUALITAS_AUDIT	0.040856	0.039923	1.023374	0.3068
C	0.190330	0.043552	4.370125	0.0000

Effects Specification

~~Cross-section fixed (dummy variables)~~

R-squared	0.939218	Mean dependent var	0.241332
Adjusted R-squared	0.923163	S.D. dependent var	0.444006
S.E. of regression	0.123077	Akaike info criterion	-1.167275
Sum squared resid	5.619844	Schwarz criterion	-0.292550
Log likelihood	373.3096	Hannan-Quinn criter.	-0.823136
F-statistic	58.49800	Durbin-Watson stat	1.216388
Prob(F-statistic)	0.000000		

HASIL OLAHDATA ESTIMASI MODEL REGRESI DATA PANEL DAN PEMILIHAN MODEL

REM

Dependent Variable: NILAI_PERUSAHAAN
 Method: Panel EGLS (Cross-section random effects)
 Date: 05/11/21 Time: 10:45
 Sample: 2016 2020
 Periods included: 5
 Cross-sections included: 94
 Total panel (balanced) observations: 470
 Swamy and Arora estimator of component variances

Variable	Coefficient	Std. Error	t-Statistic	Prob.
KOMISARIS_INDEPENDEN	-0.074994	0.093440	-0.802584	0.4226
KEP_MANAJERIAL	-0.017045	0.008494	-2.006715	0.0454
KEP_ASING	-0.038444	0.039978	-0.961646	0.3367
HUTANG	0.095555	0.039361	2.427666	0.0156
KUALITAS_AUDIT	0.017731	0.036117	0.490950	0.6237
C	0.194226	0.057942	3.352067	0.0009

Effects Specification		S.D.	Rho
Cross-section random		0.389555	0.9092
Idiosyncratic random		0.123077	0.0908

Weighted Statistics			
R-squared	0.023609	Mean dependent var	0.033763
Adjusted R-squared	0.013088	S.D. dependent var	0.126953
S.E. of regression	0.126119	Sum squared resid	7.380417
F-statistic	2.243939	Durbin-Watson stat	0.929292
Prob(F-statistic)	0.049016		

Unweighted Statistics			
R-squared	-0.000175	Mean dependent var	0.241332
Sum squared resid	92.47552	Durbin-Watson stat	0.074166

HASIL OLAHDATA ESTIMASI MODEL REGRESI DATA PANEL DAN PEMILIHAN MODEL

LM

Lagrange Multiplier Tests for Random Effects
 Null hypotheses: No effects
 Alternative hypotheses: Two-sided (Breusch-Pagan) and one-sided
 (all others) alternatives

	Test Hypothesis		
	Cross-section	Time	Both
Breusch-Pagan	704.6706 (0.0000)	1.535415 (0.2153)	706.2060 (0.0000)
Honda	26.54563 (0.0000)	-1.239119 --	17.89441 (0.0000)
King-Wu	26.54563 (0.0000)	-1.239119 --	4.177300 (0.0000)
Standardized Honda	27.32420 (0.0000)	-1.035074 --	12.78827 (0.0000)
Standardized King-Wu	27.32420 (0.0000)	-1.035074 --	1.592550 (0.0556)
Gourieriou, et al.*	--	--	704.6706 (< 0.01)
*Mixed chi-square asymptotic critical values :			
	1%	7.289	
	5%	4.321	
	10%	2.952	

HASIL OLAHDATA ESTIMASI MODEL REGRESI DATA PANEL DAN PEMILIHAN MODEL

CHOW

Redundant Fixed Effects Tests
Equation: Untitled
Test cross-section fixed effects

Effects Test	Statistic	d.f.	Prob.
Cross-section F	50.546294	(93,371)	0.0000
Cross-section Chi-square	1229.167526	93	0.0000

Cross-section fixed effects test equation:
Dependent Variable: NILAI_PERUSAHAAN
Method: Panel Least Squares
Date: 05/11/21 Time: 10:47
Sample: 2016 2020
Periods included: 5
Cross-sections included: 94
Total panel (balanced) observations: 470

Variable	Coefficient	Std. Error	t-Statistic	Prob.
KOMISARIS_INDEPENDEN	0.456800	0.163157	2.799761	0.0053
KEP_MANAJERIAL	0.036790	0.015716	2.340875	0.0197
KEP_ASING	0.130558	0.043309	3.014593	0.0027
HUTANG	0.222112	0.046918	4.734044	0.0000
KUALITAS_AUDIT	0.257074	0.038109	6.745799	0.0000
C	0.378318	0.068552	5.518676	0.0000
R-squared	0.169075	Mean dependent var		0.241332
Adjusted R-squared	0.160121	S.D. dependent var		0.444006
S.E. of regression	0.406909	Akaike info criterion		1.052230
Sum squared resid	76.82684	Schwarz criterion		1.105244
Log likelihood	-241.2741	Hannan-Quinn criter.		1.073087
F-statistic	18.88273	Durbin-Watson stat		0.129078
Prob(F-statistic)	0.000000			

HASIL OLAHDATA ESTIMASI MODEL REGRESI DATA PANEL DAN PEMILIHAN MODEL

HAUSMAN

Correlated Random Effects - Hausman Test
Equation: Untitled
Test cross-section random effects

Test Summary	Chi-Sq. Statistic	Chi-Sq. d.f.	Prob.
Cross-section random	28.226075	5	0.0000

Cross-section random effects test comparisons:

Variable	Fixed	Random	Var(Diff.)	Prob.
KOMISARIS_INDEPENDEN	-0.116173	-0.074994	0.000519	0.0707
KEP_MANAJERIAL	-0.023341	-0.017045	0.000004	0.0014
KEP_ASING	-0.084614	-0.038444	0.000337	0.0119
HUTANG	0.076139	0.095555	0.000262	0.2301
KUALITAS_AUDIT	-0.040856	0.017731	0.000289	0.0006

Cross-section random effects test equation:

Dependent Variable: NILAI_PERUSAHAAN

Method: Panel Least Squares

Date: 05/11/21 Time: 10:49

Sample: 2016 2020

Periods included: 5

Cross-sections included: 94

Total panel (balanced) observations: 470

Variable	Coefficient	Std. Error	t-Statistic	Prob.
C	0.190330	0.043552	4.370125	0.0000
KOMISARIS_INDEPENDEN	0.116173	0.096178	1.207891	0.2279
KEP_MANAJERIAL	0.023341	0.008720	2.676808	0.0078
KEP_ASING	0.084614	0.043988	2.023585	0.0452
HUTANG	-0.076139	0.042556	-2.289139	0.0344
KUALITAS_AUDIT	0.040856	0.039923	1.023374	0.3068

Effects Specification

Cross-section fixed (dummy variables)

R-squared	0.939218	Mean dependent var	0.241332
Adjusted R-squared	0.923163	S.D. dependent var	0.444006
S.E. of regression	0.123077	Akaike info criterion	-1.167275
Sum squared resid	5.619844	Schwarz criterion	-0.292550
Log likelihood	373.3096	Hannan-Quinn criter.	-0.823136
F-statistic	58.49800	Durbin-Watson stat	1.216388
Prob(F-statistic)	0.000000		

Lampiran 5 Biodata Penelitian**BIODATA PENELITI****Data Pribadi**

Nama : Ahmad Abdullah Firdaus
NPM : 11170000019
Tempat dan Tanggal Lahir : Jakarta, 16 Desember 1997
Agama : Islam
Kewarganegaraan : Indonesia
Telepon : 0895-3403-48235

Pendidikan Formal

SD Pantai Indah : Lulus Tahun 2010
SMP N 53 Jakarta : Lulus Tahun 2013
SMK N 12 Jakarta : Lulus Tahun 2016
STIE Indonesia, Jakarta : Tahun 2017 sampai sekarang

Lampiran 6 Surat Keterangan Bebas Riset**SURAT KETERANGAN BEBAS RISET**

Dengan ini menyatakan bahwa skripsi yang berjudul:

**PENGARUH *GOOD CORPORATE GOVERNANCE*
(KOMISARIS INDEPENDEN, KEPEMILIKAN MANAJERIAL,
KEPEMILIKAN ASING, HUTANG DAN KUALITAS AUDIT)
TERHADAP NILAI PERUSAHAAN**

tidak memerlukan surat izin riset, dikarenakan data yang diperlukan berkenaan dalam penelitian dapat diakses melalui media internet, sehingga peneliti tidak perlu mendatangi secara langsung unit penelitian yang bersangkutan. Data dalam penelitian ini diperoleh dengan mengunduh situs ::<https://www.idx.co.id/>.

Jakarta, 5 Juli 2021

Mahasiswa,



Ahmad Abdullah Firdaus